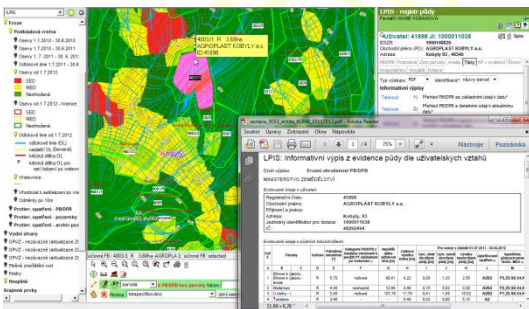


Sitewell LPIS® and its portfolio of applications is capable to help prevent frauds & property damage, comprehensively fully administer subsidies business logic and apply best practices into **control of GAEC compliance rules**. We do help mainly public sector and property holdings to care better about cultural landscape and to plan, optimize and monitor its usage. Optimizing land use management due best practices and keeping revenues growing could be achieved due our **innovative approach and concept**.



Land use blocks could be updated geographically directly via website with support of real-time polygon topological operations and project changes, based on long transactions concept.



You can easily manage supervisions of observing limits (nitrate, erosions, sowing etc.) and rules in the landscape thanks to automatic geospatial classification, with easy understandable thematic maps not only for state authorities, but of course for farmers and even public.

Modern management of territory is possible thanks to lucid tools for maintenance of continuous land use compliance over time with support of genealogical history and land classification, all that in real time. We do bring benefits for authorities, land users, owners and public to maintain healthier cultivated landscape.

Keep processes in the territory under control, keep environment healthy, protect quality of soils and do achieve better sustainability in rural areas at the same time, thanks to competitive and profitable farmers, is our everyday lovely challenge!

Sitewell LPIS is advanced solution for land use management in real time and supervision of observing rules for farming and environmental sustainability. It enables to optimally use potential of cultural landscape with preserving and even improving its natural value.

The effective fulfilling of landscape potential, monitoring of its usage over time and perfect support for farmers is now possible thanks to smart software solution that helps you manage without any problems all complex EC regulations – monitoring of users relations, planning of their changes, registering elements in area, regional planning and it of course can also serve as a reference register for administration of applications for agricultural subsidies. Take the competitive advantage of timeless Czech LPIS and update your land use data in real time! **Don't wait for scary semiautomatic batch processing; have everyday real overview of land use status, traceable history included.** Thanks to automatic geospatial classification and dynamic thematic maps even the complicated rules

„Czech IACS thanks to Sitewell LPIS® logic & effectiveness is increasing farmer's satisfaction and competitiveness. We do help rural areas to stay healthy and alive.” MoA authorities

become understandable to everyone. Share updated land use information and land parcel classification at the same time. Enjoy the comfort of online system and have all essential information on land important for your farming clearly displayed in map accessible from anywhere. The administration of grants and subsidies has never been as transparent and clear as with Sitewell Lpis®. Do use a system that supports efficient farming in accordance with the interests of the protection of the environment and helps the landscape!

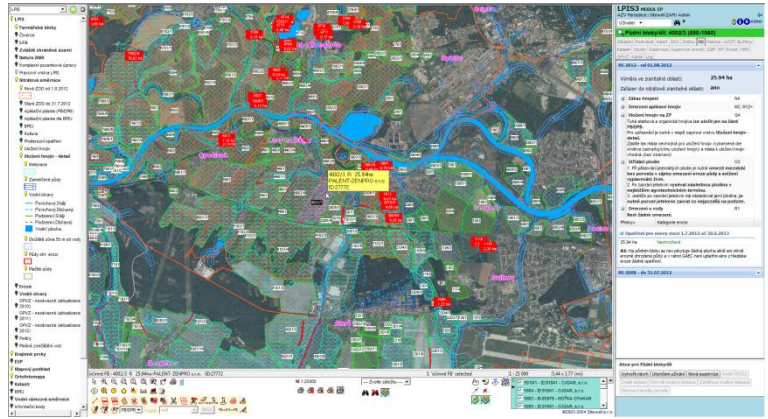
Keep finally a transparent online common source of high-quality data for citizens, officials, economists, managers, farmers and the general public. Reduce total cost of ownership of information systems for the monitoring and management of the territory thanks to superior architecture and concept.

Why the innovative solution Sitewell Lpis®?

Thanks to the concept of **update in real time**, with the support for genealogical versioning you have daily overview of land use state or the upcoming changes. Everyone works with the same data secured by **powerful technology Oracle® Spatial Graph Data Guard** with automatic geospatial classification. The matters you had to previously count manually in batches at high costs in traditional GIS products will be reset with Sitewell solution. Even the difficult rules of land management are comprehensible to everyone thanks to clear thematic maps and graphic icons in the maps. The system includes tools for transactional processing of land use changes over time and allows special features and modules made-to-measure. **Secured internet portal** offers reliable place with access to high-quality data suited for GPS in precision farming to farmers. It is matter of course to graphically report new proposals of changes via Internet. Generating statements and reports and subsidy application pre-prints is fully automatic on the Portal of farmer. The public can see transparently the relations in the area via Internet. For trend analyses in time, immediate statistics and views we do use the most modern tools of geospatial business intelligence on Oracle BI 11g platform.

Features & benefits overview

of the **most advanced LPIS** in Europe with **real innovations** incl. nitrate, erosion, sowing, landscape element and structures, cadastre, LPIS QF, soils quality, organic, veterinary, phytosanitary, GMO, fertilization, DM, spatial exports and full GAEC cross compliance support both for state and farmers collaborating in one single system in real-time!



Geospatial Business Intelligence helps better understanding of trends and data and to evaluate the impacts of the policies.

The assessment of agricultural policy and its impacts is impossible without perfect analyses and perspective. Thematic maps are the way how to analyse even millions of data for decades without difficulty. The same tools serve also for **evaluation & preventive quality data control** and users behave monitoring.

The Public LPIS Geospatial Portal

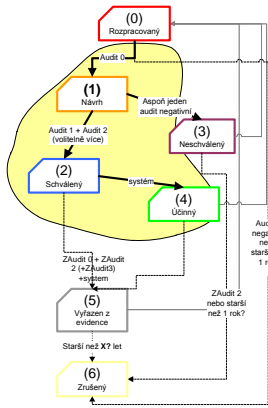
Freely accessible internet map application gives the real overview of land use state and enables land owners to control who and how farms on their land. The common feature is the possibility to get data either in export format into e-mail or via web services – all maps are accessible with compliance with EU directive INSPIRE.

Sitewell LPIS® is a highly innovative system for land management covering all tasks from planning, usage, QA/QC and auditing:

- reflects land and its **real use** always in **real time** with **traceable history** without delay caused by batch approach of obsolete solutions
- is recognized as a reputable basic **reference register for subsidies administration and payment eligibility control**
- fully classifies land in 4D incl. detailed digital terrain model calculations
- can fully replace several discrete expensive historical (paper and electronic) land registers with a **unified seamless system**
- hundreds of institutions and hundreds of thousands of businesses can collaborate at a unique digital platform in real time
- **reduces administrative burden** and operating costs, **made processes more efficient**, increases self-reliance and responsibility of officers and is decreasing dependence of farmers on expensive consultants
- supports full understatement of EU/EC regulations to professionals & public
- enables agricultural **subsidies even to small family farms**
- offers complete consistency of all substantial issues for easy and economically efficient farming
- has been designed made-to-measure to laws and regulations of Ministry of Agriculture in the Czech republic and successfully is in operation for 8+ years
- **reduces bureaucratic burden of farmers** significantly compared with other obsolete concepts used in EU
- has functions for **complete cadastre with its history** – changes traceability, overlaps calculations of relations between land users and land owners
- serves for certifying agencies and inspecting organizations as very efficient and easier backward checks of land use and subsidies rules observing
- complex map atlases and sheets splitting functionality, incl. subsidies attachments and archiving of selected measures by farmers

Land use and automatic geospatial classification in Sitewell Lpis® Blocks

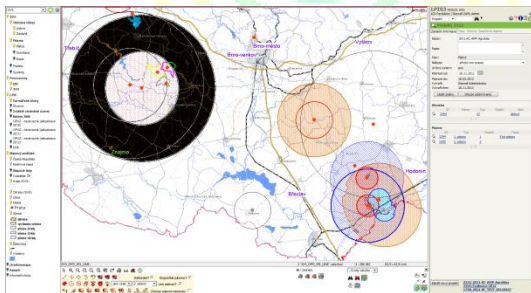
Core of the system is a **land use block** which is **in force always to just one location at a moment**. There can be created more versions of land use concurrently. **Each change has to be**



approved by more people. The concept can be used for farmer's blocks, landscape features, blocks of regional planning, water, forest, protective zones, etc.

Special features for Ministry of Agriculture

do help many state authorities **to control the use of the landscape**, to monitor growing of GMO or to plan veterinary and phytosanitary measures and manage risks incl. even support for land reform.



The Farmers Portal – helps to

increase the comprehensibility of complicated rules and EU policies (the Nitrates Directive and Erosions reg. included) to all farmers **and enables them to access online high-quality data** downloadable by farmers not only for as a high precision farming, but also for optimization. Farmers are allowed to **report**



land use change proposals directly online through simple to use GIS app based on **topology aware map data model**, fully in geospatial clear form and tools.

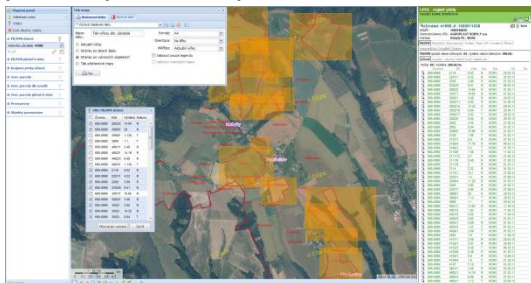
- has all integrated data related to land use stored into a single complex system used by farmers, officers, inspectors and public, such as:
 - land use register; special register for vineyards, hop fields and orchards; farming objects; sowings; soil erosion threat; watercourse protection against agricultural pollution in compliance with the Nitrate Directive; land feature register; ponds; GMO; plant pests; sources of contagions; locations of dunghills connected with emergency plans for farmers and many others
- all data could be accessed from smart phones and tablets (Android, Apple iOS, Windows 8 Surface)
- has public portal including INSPIRE WMS/WFC/WCS services capability
- whole modular solution consists of 44+ agro-environmental application modules

Sitewell Lpis® Farming feature benefits:

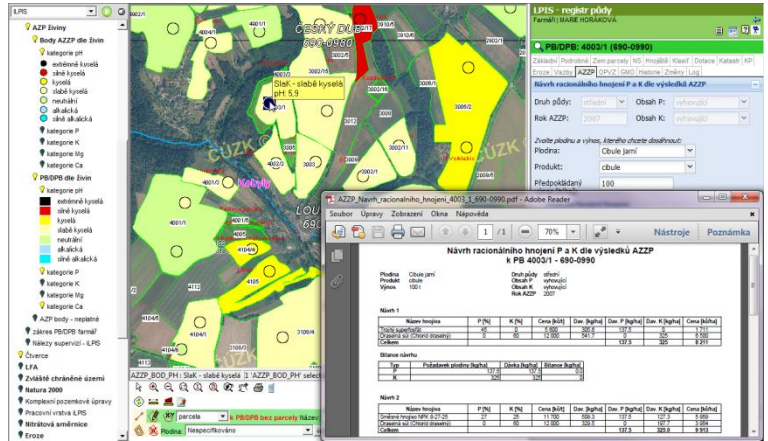
LPIS solution is now available to all farmers thanks to accessibility of data via internet portal. Laws, rules and regulations are for farmers clearly displayed in the system in the form thematic maps and text labels so they can easily handle the flood of all difficult official decisions and they can devote more time to actual farming rather than to do some administrative work. The rules are now calculated for each individual block separately and it is no longer necessary to study stack of regulations, everything is available at a mouse click.

The farmers orientate themselves quickly in land changes thanks to land parcel overview accessible from one point and get appropriate materials for effective farming management. The high-quality data for free of charge can be acquired through export module called Datawell (shapefiles and other formats supported, incl. geospatial classified data).

Then there are available informational listings, printed reports and map sets of all their land blocks,



pre-printed forms/applications for subsidies, information on farming restrictions due to the Nitrate Directive and other regulations and many other highly-valued and pre-analysed information.



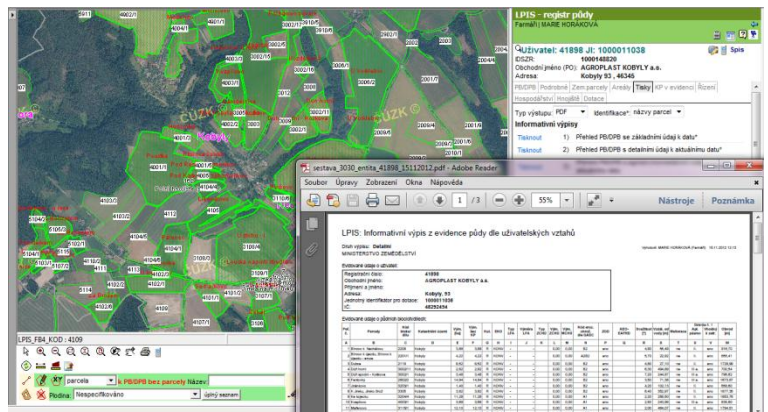
Another advantage of the online farming support is that the farmer can see the complete overview of his own and predecessors land use history and all other changes over time together with soil quality visualization in the map based on agrochemical soil testing.

A farmer gets in LPIS intelligible, high-quality and objective information about land use; he can visualize the land block's eligibility for the grant titles even with an option to choose out of the titles he is qualified for and the system creates a pre-printed form to fill out.

LPIS made the subsidies finally accessible even to small agricultural entrepreneurs who can apply for subsidies thanks to easy-to-handle and incorruptible system from comfort of their homes (offices/fields) without any expensive intermediaries, administrative cost and consultants.

The fourth generation of Sitewell system has standardized possibility to report changes geographically and topologically clean directly inside an internet map (GIS) application. The farmer's don't have to go to any of local offices of Ministry of Agriculture to report changes – they can manage it via internet. Finally real e-government system, where the citizen doesn't go to an office with stack of paper documents and map sheets but LPIS comes to home or to office via internet connection. No paper needed anymore, everything could be communicated and signed electronically.

Users of Sitewell Lpis® work with the interactive map fully customizable by the user with an option to switch to various views (f ex. basic map + map with specific information about fertilization, sowing, the Nitrate Directive, soil quality, sources of contagions, ...) etc. Farmers themselves can decide responsibly on the basis of high-quality supporting data about their optimal future land use.



Sitewell LPIS® Blocks platform is used by Ministry of Agriculture in the Czech republic, other 140 administrative bodies and many other governmental and collaborative private companies (outsourcing of some task), 40+K farmers and public as a central reference land register in compliance with law and is fully audited. System is integrated onto information system of paying agency too. German SAP-ERP-CRM paying modules are used mainly for banking, accounting and tax controlling operations.

Sitewell Lpis® is engineered to work together and could be deployed for nonstop operation on Oracle®.

Hardware and Software
ORACLE®
Engineered to Work Together

For more information visit www.lpis.cz, where you will found detailed case study and you could also try a public version of the Czech public geoportal.

lpis@sitewell.cz
 +420 255 710 020

Still looking for reasons why Sitewell Lpis®?

- Unique real-time concept enables many superior GAEC applications
- Environment equipped for large data volumes analyses and reporting in 4D.
- Terabytes of geospatial data are piece of cake for Sitewell Lpis®
- Possibility to work with real-time data and the possibility to look back to history and to compare data over time; rules contravention finding
- The common parts of the system are **online data exports, printing of maps sets and informational printouts and confirmations**, which can be customized on request.
- Tools for Cross-compliance checks & risk analysis
- Reliable and high-quality data source (Sitewell team and system has and could improve data quality from quarter of database errors down to few ‰)
- Bi-directional integration with payment software via XML
- A system based on single secure database @Oracle Spatial 11g
- Stable system allowing nonstop usage due Oracle RAC Data Guard
- The highest level of security and backup thanks to Oracle®
- Sitewell Lpis® could be integrated with ERP system bi-directionally.
- Sitewell team (founded 1996) has more than 13 years' experience in the field of Land Management/LPIS/IACS and environmental systems, EAM and operational solutions including onsite apps for offline and online usage.

Sitewell Lpis® is compatible with Sitewell Eira® platform

and so you can take advantage of all benefits of this product for team collaboration in the territory & space and time in 4D:

Portal for processes Tasks Management, Subject, Documents, optimal usage of Resources +Geospatial Business Intelligence
www.eira.cz

For operational, **process enterprise geospatial land assets management and real estate** we offer Sitewell Golam®
www.golam.cz



The screenshot displays the LPIS33 application interface. On the left, there is a legend with various categories like 'Účelové zeměpisné údaje', 'Účelové zeměpisné údaje - detail', and 'Vodní úhrady'. The main area shows a map of agricultural land with various overlays, including field boundaries, water bodies, and specific land use zones. A central pop-up window shows details for a specific field: '5101/1 R 12.839ha Zemědělské družstvo se sídlem ve Sloupnici ID:23429'. On the right, there is a detailed data panel for 'Půdní bloky: 3403 (610-1070)'. This panel includes information about the area (25.36 ha), the date of the last update (01.08.2012), and a list of measures (Základní Podrobné Klasif., EKO, Změny, NS, Historie, AZPP, Bufferly, Katastr, Vazby, Supervize, Supervize (nové), SZF, KP, Eroze, VRS, OPVZ, Admin, Log). Below this, there are sections for 'Výměra ve zranitelné oblasti' (25.36 ha) and 'Opasení pro ossevy mezi 1.7.2012 až 30.6.2013' (1.85 ha). The bottom of the interface shows a toolbar with various navigation and editing tools, and a status bar with coordinates and scale information.